



MODEL SELECT

FISH

PARTY

FISH XP3

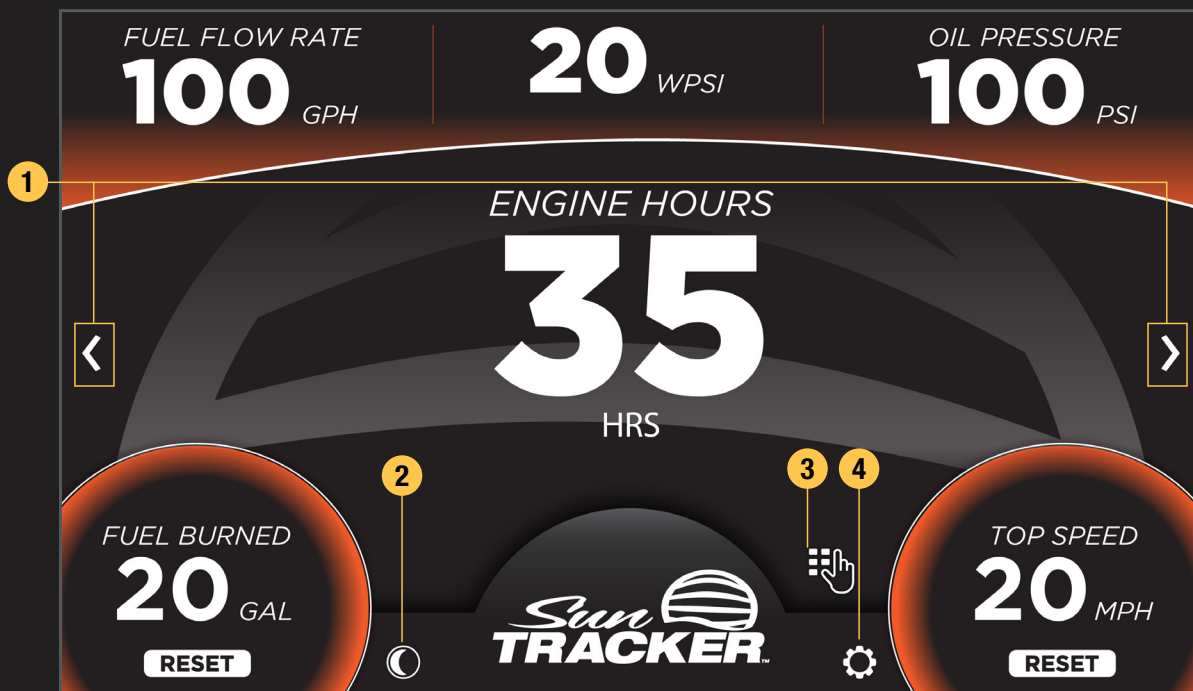
PARTY XP3



Sun
TRACKER.

MODEL SELECT MENU

Upon initial start-up of the system or after a factory reset the Model Select menu will be the first screen to appear. Select the model number corresponding to Sun Tracker boat to proceed. The selection will be saved and not have to be repeated until another factory reset.



MAIN DISPLAY

The high-resolution touch control display brings more features to the surface providing an unmatched user experience.

Critical information including engine performance, fuel level and depth is always in view or just a touch away.

1. Screen Mode Select
2. Night Mode Toggle
3. Keypad Screen Button (only visible if keypad is not detected to be present in the system)
4. Settings Menu Button



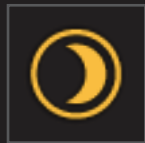
ALERTS & ALARMS

1. Low Fuel Indicator
2. Low Voltage Indicator
3. Check Engine Alarm
4. Alert Indicator
5. Bilge Active Alarm



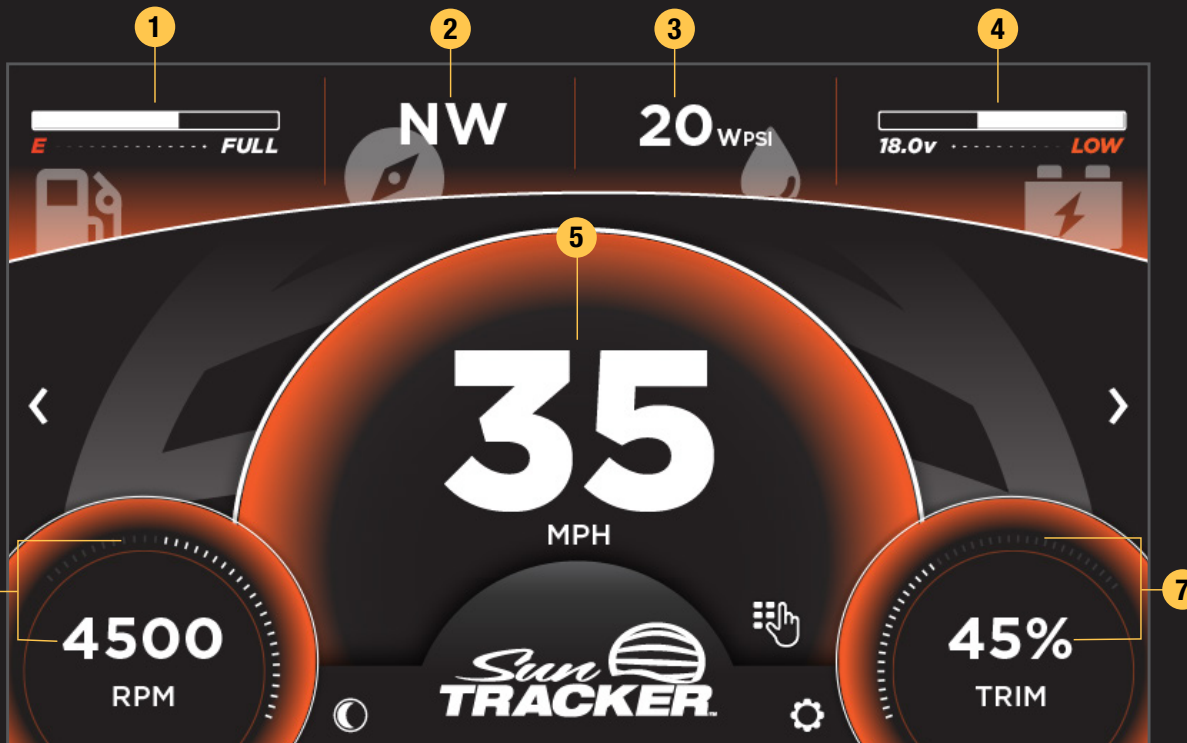
ALERTS & ALARMS

1. Alert Banner
2. Alert Confirmation Button



The Night Mode button toggles the back-lighting between the daytime and nighttime set points. This can be adjusted in the System Display section of the Settings menu.

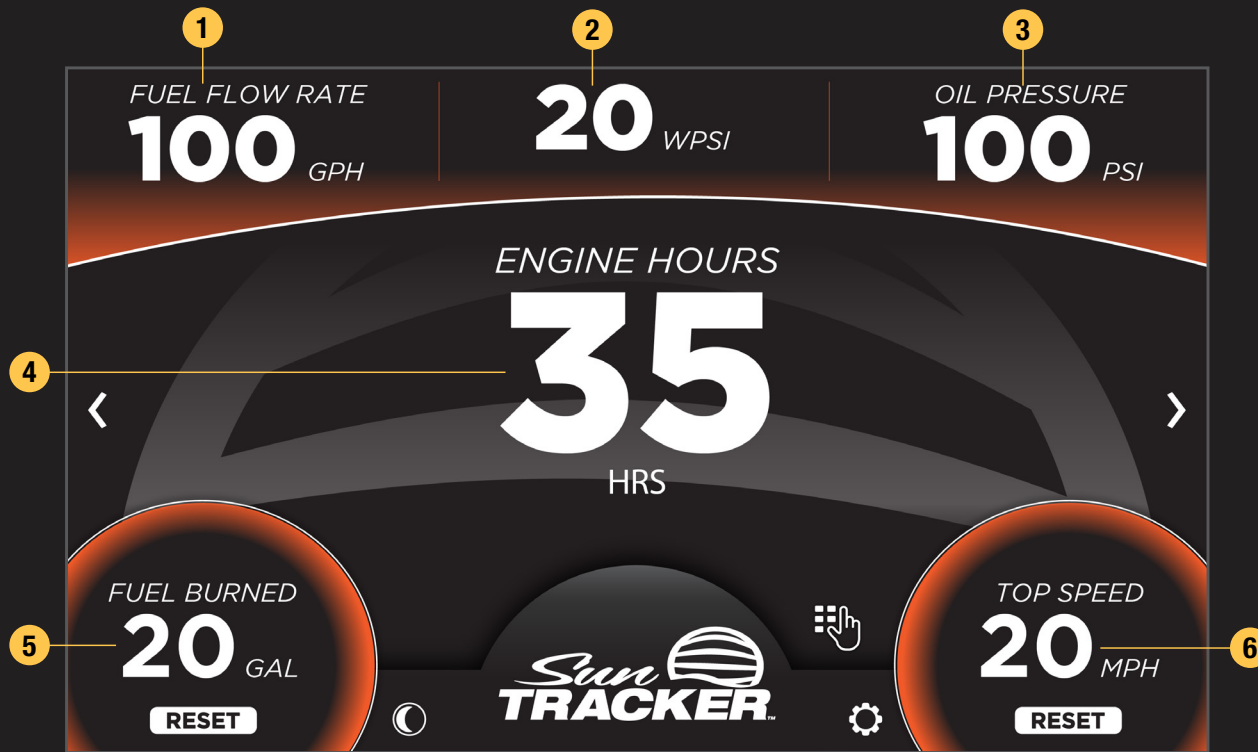
NIGHT MODE



CRUISE SCREEN

The Cruise Screen presents critical information in a traditional gauge cluster format. Speed, engine RPM, voltage, trim and fuel levels are predominantly displayed.

1. Fuel
2. Heading
3. Water Pressure
4. Voltage
5. Speed
6. Engine RPM
7. Trim Level



INFO SCREEN

The detailed driver Information Screen provides simultaneous read-outs for important engine systems including water pressure, engine hours, fuel flow rate and oil pressure. Top speed and fuel burned are also recorded and display in this mode, both of which can be reset by holding the Reset button for 2 seconds.

1. Fuel Flow Rate
2. Water Pressure
3. Oil Pressure
4. Engine Hours
5. Fuel Burned (Resettable)
6. Top Speed (Resettable)

SETTINGS SCREEN

Manage updates, system settings and configurations, and view diagnostics information in the settings screen. Changes are automatically saved upon leaving the settings screen mode.





SYSTEM SETTINGS MENU

The System Settings Menu contains options for software updates, display options and factory reset.



SOFTWARE UPDATE

Use the Software Update screen to view the installed software revisions and update the existing software via USB drive.

Verify that the software update is the only file that is on the USB Input Device.

Insert the USB device into the USB Port that is found at the Dash. Once the file is finished copying to the system, an Update button will appear.

Press the Update button and Yes on the confirmation alert.



The system will reboot to a status bar and animation on the touch display. This status bar shows the user the progress of the software update. Once the software update is complete, the system will reboot into the application. You may then remove the USB drive.



DISPLAY OPTIONS

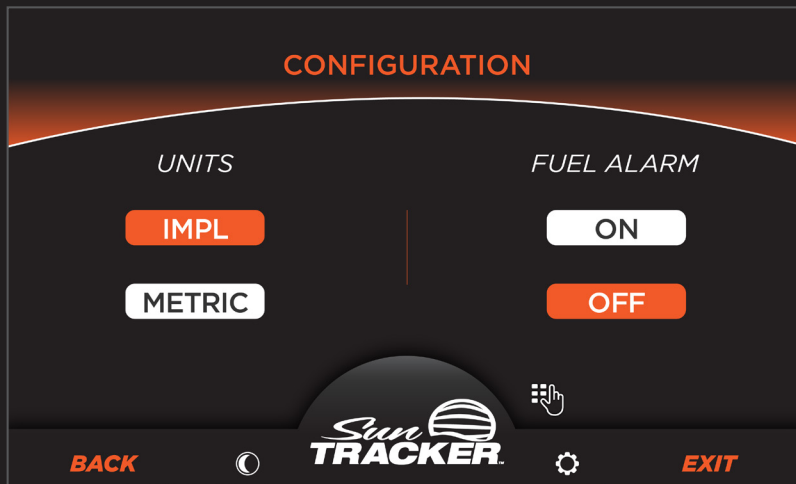
Adjust backlighting brightness levels for Day and Night modes in the Display Options Screen. The Night Mode button toggles between the two set-points.



FACTORY RESET

Restore your system back to the default factory settings in the Factory Reset screen. Tap the Reset button and Yes on the confirmation alert to revert all settings.





CONFIGURATION MENU

Customize options for a preferred boating experience in the Configuration Settings menu. Switch between Imperial or Metric units for system wide read-outs and control Fuel Alarm.



DIAGNOSTICS MENU

Displays on-screen diagnostic data from the Diagnostics Settings menu. Information is broken down between engine related diagnostics and system related.



SYSTEM DIAGNOSTICS

View boat sensors data, power module outputs, current active or inactive engine alarms, and global positioning system status in the System Diagnostics screen. CAN modules will turn green when the modules are detected. CAN modules will turn gray when there is no communication between the display and the module.

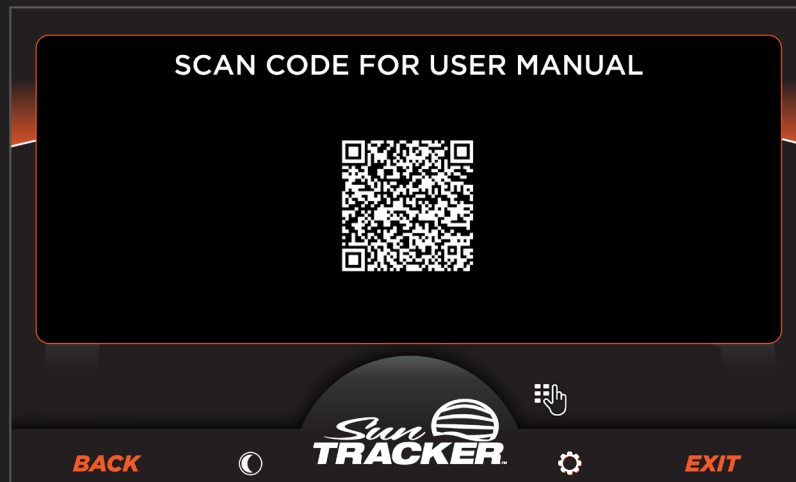
CAN 1 = Engine Communication Network

CAN 2 = Boat Accessory Communication Network



ENGINE DIAGNOSTICS

View engine related data such as speed, RPM, trim level, water pressure, voltage, engine hours, etc. in the Engine Diagnostics screen.



USER MANUAL QR CODE

Scanning the displayed User Manual QR code will direct the viewer to the online guide from their mobile device. The online version will be the current and the most up-to-date source of information.





KEYPAD SCREEN

The Keypad Screen functions as a virtual on-screen button controller, and mimics the layout and operation of the real-world counterpart.

Keypad screen and icon only appear if the keypad is not detected to be present in the system. Button configuration and functionality will vary depending upon selected boat model.

FISH

1. Navigation and Anchor Lights On/Off
2. Courtesy Lights On/Off
3. Docking Lights On/Off
4. Aerator Manual/Auto/Off
5. Accessory On/Off
6. Horn
7. Screen Dimming
8. Accessory On/Off
9. Accessory On/Off
10. All Outputs Off



FISH XP3

1. Navigation and Anchor Lights On/Off
2. Courtesy Lighting On/Off
3. Docking Lighting On/Off
4. Aerator Manual/Auto/Off
5. Bilge On/Off
6. Horn
7. Screen Dimming
8. Accessory On/Off
9. Accessory On/Off
10. All Outputs Off



PARTY

1. Navigation and Anchor Lights On/Off
2. Courtesy Lights On/Off
3. Docking Lights On/Off
4. Accessory On/Off
5. Accessory On/Off
6. Horn
7. Screen Dimming
8. Accessory On/Off
9. Accessory On/Off
10. All Outputs Off



PARTY XP3

1. Navigation and Anchor Lights On/Off
2. Courtesy Lights On/Off
3. Docking Lights On/Off
4. Accessory On/Off
5. Bilge On/Off
6. Horn
7. Screen Dimming
8. Accessory On/Off
9. Accessory On/Off
10. All Outputs Off